



Abbey Meads Community Primary School

Hugo Drive, Swindon, Wiltshire, SN25 4GY

Head Teacher: Mr Robert M. Buckley

Telephone: 01793 723239

Fax: 01793 723201

Email: admin@abbeymeads.swindon.sch.uk

Website: www.abbeymeads.swindon.sch.uk

3rd September 2020

DAY 2 Update!

Dear Parents and Carers,

As a result of our early experiences with drop off and pick up times, we have decided to fine tune these procedures.

The morning remains unchanged and we ask the parents continue to follow the current system.

Arrive between 8.20-8.50 – please look out for crowding and keep back if a queue starts to form – we still have hundreds trying to access around 8.30am and individuals with lots of space arriving around 8.40am

Please remember that whilst bikes are easy to get in, they are very difficult to get out at the end of the day. We have asked you not to bring these unless you are able to take them home again. There are exceptions to rules for families finding themselves in exceptional circumstances, please understand this and be considerate of each other.

The afternoon is quite a different thing. We have considered just opening the gates again, but know this will lead to many adults 60+ gathering outside a year group every night with just as little distancing as has occurred so far. It is also impossible to effect changes immediately as people have already made plans for today and tomorrow using current timings.

SO - From MONDAY 7th September there will be these new specific timings. Please see below and Map on Page 3.

Please be there on time but not before as this slows everything down.

We do acknowledge that those with more than one child may need to get to different gates and by the time they get there others have started to arrive. Please be considerate if someone with a child in a younger age group tries to get ahead of you in the queue - **they need to be!**

Monday 7th September 2020

Year 1Chestnut	2.50pm (1.20pm Fridays)	Main Gate
Year 1Hornbeam	2.55pm (1.25pm Friday)	Main Gate
Year 2Rowan	3.00pm (1.30pm Fridays)	Main Gate
Year 2Sycamore	3.05pm (1.35pm Fridays)	Main Gate
Year 3Juniper	3.10pm (1.40pm Fridays)	Main Gate
Year 3Willow	3.15pm (1.45pm Fridays)	Main Gate
Year 4Ash	2.50pm (1.20pm Fridays)	Shops Gate
Year 4Oak	2.55pm (1.25pm Friday)	Shops Gate
Year 4Maple	3.00pm (1.30pm Fridays)	Shops Gate
Year 5Holly	3.05pm (1.35pm Fridays)	Shops Gate
Year 5Elm	3.10pm (1.40pm Fridays)	Shops Gate
Year 6	3.15pm (1.45pm Fridays)	Shops Gate

Please allow time for each class to leave at a time.

Please respect social distancing.

Please listen and respond to staff if they ask you to move back / let other people through.

Please listen to instructions that may keep you further back from the gates until your class is called.

We will ask parents to stay away from the gates and wait to be called forward 1 class at a time.

Nursery is the same as already stated and does not change.

Reception will remain the same for now – but changes from 16th September – **please see map page 3.**

Please make yourself known to staff if at the front of the line – it is hard enough to recognise people as it is without masks on. Don't be offended – **just tell us who you are wishing to collect, to help us get things moving.**

The Mornings will be a one way system around the playgrounds with only one entrance for all children MAIN GATE and two exits Shops and Nursery.

The afternoons will have staggered exits from ALL gates as per letter 15th July 2020.

MAIN GATE
ENTRANCE ONLY ALL CHILDREN

Masks need to be worn inside the building by visiting adults (like a shop)

Masks are requested on the playground – especially when high numbers of adults occur. Children are not required to wear masks, which remains your discretion.

NURSERY GATE
EXIT ONLY

SHOPS GATE
EXIT ONLY

Key for Mornings only!

Blue is way in



Brown is way out

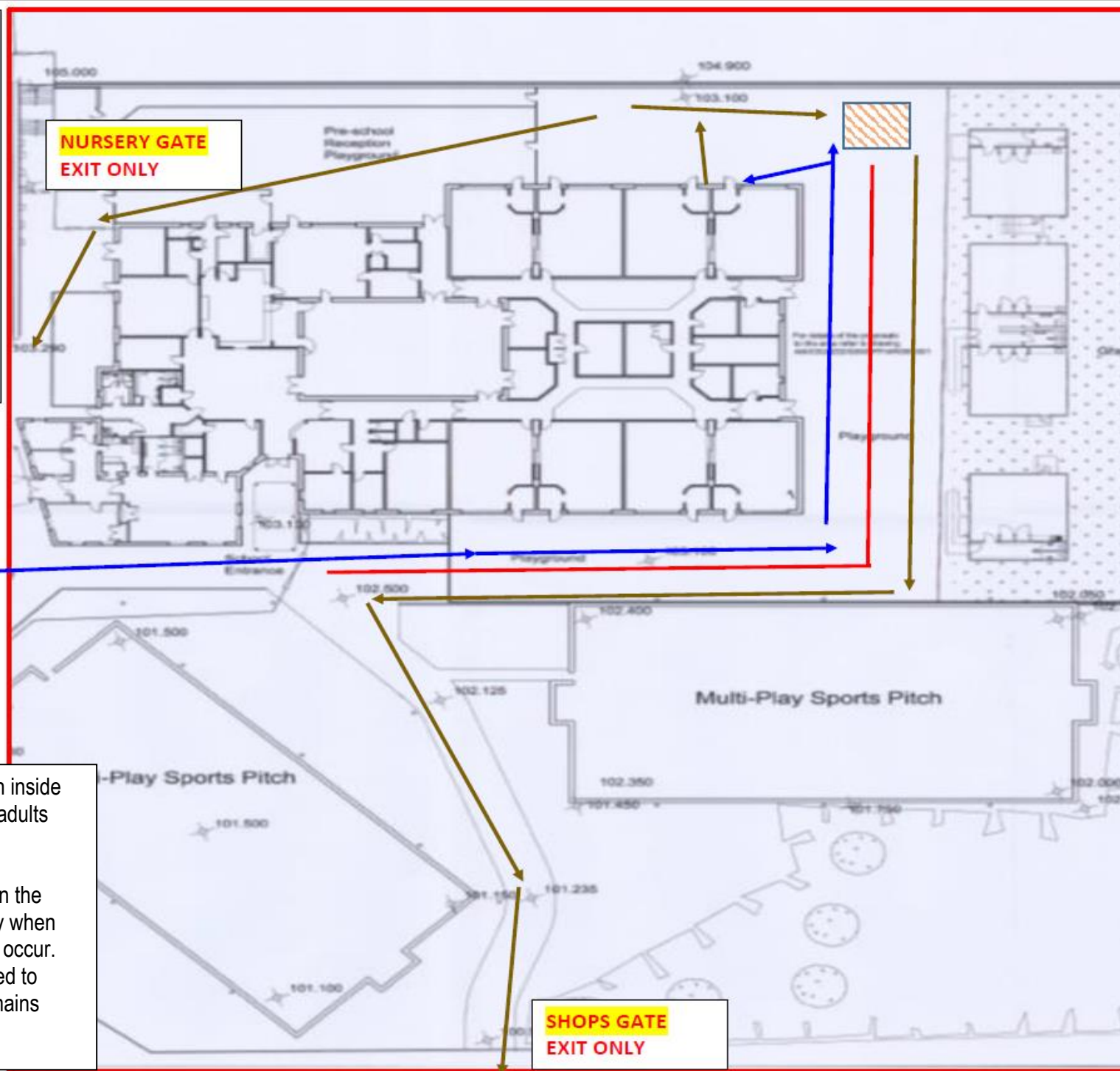


Red is centre of playground – keep left!

Cross over Zone to double back and out - take care



Keep Left BUT Right /U-turns are allowed to ease your exit **but** please be considerate of oncoming people in the opposite direction.



AFTERNOONS ONLY

Timings of exit
for specific
CLASSES at
specific times.

Nursery Gate

Nursery Children
11.30am / 3.15pm

Reception Children
16/17/18 September
Just these three days...

Group A
1.20pm
Group B
1.30pm

Reception Children
From 21st September
Group A
2.50pm Mon-Thurs
and 1.20pm Fridays
Group B
3pm Mon-Thurs and
1.30pm Fridays

Reception Children
From 2nd November
New times will be
allocated to each class
as they are set ready
for Term 2.

Main Gate

Year 1Chestnut
Mon-Thurs 2.50pm Friday 1.20pm
Year 1Hornbeam
Mon-Thurs 2.55pm Friday 1.25pm

Year 2Rowan
Mon-Thurs 3.00pm Friday 1.30pm
Year 2Sycamore
Mon-Thurs 3.05pm Friday 1.35pm

Year 3Juniper
Mon-Thurs 3.10pm Friday 1.40pm
Year 3Willow
Mon-Thurs 3.15pm Friday 1.45pm

Shops Gate

Year 4Ash
Mon-Thurs 2.50pm & Friday 1.20pm
Year 4Oak
Mon-Thurs 2.55pm & Friday 1.25pm
Year 4Maple
Mon-Thurs 3pm & Friday 1.30pm

Year 5Holly
Mon-Thurs 3.05pm & Fridays 1.35pm
Year 5Elm
Mon-Thurs 3.10pm & Fridays 1.40pm
Year 6 (All)
Mon-Thurs 3.15pm & Fridays 1.45pm

